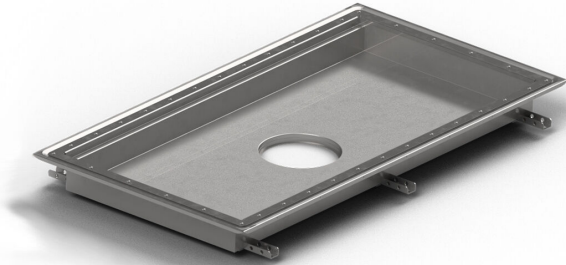


## Item 818142

Purus channel volume for vinyl is a floor channel made of acid-resistant stainless steel for installation in concrete. The floor channel is 400x400x100 mm with a mid outlet and is intended for vinyl flooring. The floor channel needs to be supplemented with grid depending on the environment and outlet house in acid-resistant stainless steel. Purus channel volume is adapted for environments with requirements for hygiene, has a large volume and high flow capacity.



## Item 818143

Purus channel volume for vinyl is a floor channel made of acid-resistant stainless steel for installation in concrete. The floor channel is 600x400x100 mm med ett mittplacerat utlopp och är avsedd för plastmatta som ytskikt. The floor channel needs to be supplemented with grid depending on the environment and outlet house in acid-resistant stainless steel. Purus channel volume is adapted for environments with requirements for hygiene, has a large volume and high flow capacity.

## Item 818144

Purus channel volume for vinyl is a floor channel made of acid-resistant stainless steel for installation in concrete. The floor channel is 900x600x100 mm med ett mittplacerat utlopp och är avsedd för plastmatta som ytskikt. The floor channel needs to be supplemented with grid depending on the environment and outlet house in acid-resistant stainless steel. Purus

channel volume is adapted for environments with requirements for hygiene, has a large volume and high flow capacity.

#### Item 818145

Purus channel volume for vinyl is a floor channel made of acid-resistant stainless steel for installation in concrete. The floor channel is 800x500x100 mm with a mid outlet and is intended for vinyl flooring. The floor channel needs to be supplemented with grid depending on the environment and outlet house in acid-resistant stainless steel. Purus channel volume is adapted for environments with requirements for hygiene, has a large volume and high flow capacity.

#### Item 818149

Purus channel volume for vinyl is a floor channel made of acid-resistant stainless steel for installation in concrete. The floor channel is 1200x600x100 mm med ett mittplacerat utlopp och är avsedd för plastmatta som ytskikt. The floor channel needs to be supplemented with grid depending on the environment and outlet house in acid-resistant stainless steel. Purus channel volume is adapted for environments with requirements for hygiene, has a large volume and high flow capacity.

#### Item 818155

Purus channel volume for vinyl is a floor channel made of acid-resistant stainless steel for installation in concrete. The floor channel is 500x300x50 mm med ett mittplacerat utlopp och är avsedd för plastmatta som ytskikt. The floor channel

needs to be supplemented with grid depending on the environment and outlet house in acid-resistant stainless steel. Purus channel volume is adapted for environments with requirements for hygiene, has a large volume and high flow capacity.

#### Item 818156

Purus channel volume for vinyl is a floor channel made of acid-resistant stainless steel for installation in concrete. The floor channel is 1000x300x50 mm with a mid outlet and is intended for vinyl flooring. The floor channel needs to be supplemented with grid depending on the environment and outlet house in acid-resistant stainless steel. Purus channel volume is adapted for environments with requirements for hygiene, has a large volume and high flow capacity.

#### Item 818157

Purus channel volume for vinyl is a floor channel made of acid-resistant stainless steel for installation in concrete. The floor channel is 300x300x200 mm med ett mittplacerat utlopp och är avsedd för plastmatta som ytskikt. The floor channel needs to be supplemented with grid depending on the environment and outlet house in acid-resistant stainless steel. Purus channel volume is adapted for environments with requirements for hygiene, has a large volume and high flow capacity.

#### Item 818158

Purus channel volume for vinyl is a floor channel made of acid-resistant stainless steel for installation in concrete. The floor

channel is 500x300x200 mm with a mid outlet and is intended for vinyl flooring. The floor channel needs to be supplemented with grid depending on the environment and outlet house in acid-resistant stainless steel. Purus channel volume is adapted for environments with requirements for hygiene, has a large volume and high flow capacity.

#### Item 818159

Purus channel volume for vinyl is a floor channel made of acid-resistant stainless steel for installation in concrete. The floor channel is 800x500x200 mm with a mid outlet and is intended for vinyl flooring. The floor channel needs to be supplemented with grid depending on the environment and outlet house in acid-resistant stainless steel. Purus channel volume is adapted for environments with requirements for hygiene, has a large volume and high flow capacity.

#### Item 856723

Purus channel volume for vinyl is a floor channel made of acid-resistant stainless steel for installation in concrete. The floor channel is 900x600x200 mm med ett mittplacerat utlopp och är avsedd för plastmatta som ytskikt. The floor channel needs to be supplemented with grid depending on the environment and outlet house in acid-resistant stainless steel. Purus channel volume is adapted for environments with requirements for hygiene, has a large volume and high flow capacity.

<b>Item Number</b>	818142
<b>Construction Height</b>	100
<b>Electrical Data</b>	15 l
<b>Floor Construction</b>	Concrete flooring
<b>Floor Covering</b>	Vinyl
<b>Function</b>	Central outlet
<b>Item Color</b>	Stainless
<b>Material</b>	Acid-resistant stainless steel 1.4404
<b>Outlet Dimension</b>	Side/bottom in stainless steel in Ø75/Ø110 mm
<b>Size</b>	400x400x100 mm
<b>Surface</b>	Pickled
<b>Version</b>	Do not forget grid/outlet house

<b>Item Number</b>	818143
<b>Construction Height</b>	100
<b>Electrical Data</b>	23 l
<b>Floor Construction</b>	Concrete flooring
<b>Floor Covering</b>	Vinyl
<b>Function</b>	Central outlet

<b>Item Color</b>	Stainless
<b>Material</b>	Acid-resistant stainless steel 1.4404
<b>Outlet Dimension</b>	Side/bottom in stainless steel in Ø75/Ø110 mm
<b>Size</b>	600x400x100 mm
<b>Surface</b>	Pickled
<b>Version</b>	Do not forget grid/outlet house
<b>Item Number</b>	818144
<b>Construction Height</b>	100
<b>Electrical Data</b>	51 l
<b>Floor Construction</b>	Concrete flooring
<b>Floor Covering</b>	Vinyl
<b>Function</b>	Central outlet
<b>Item Color</b>	Stainless
<b>Material</b>	Acid-resistant stainless steel 1.4404
<b>Outlet Dimension</b>	Side/bottom in stainless steel in Ø75/Ø110 mm
<b>Size</b>	900x600x100 mm
<b>Surface</b>	Pickled
<b>Version</b>	Do not forget grid/outlet house

<b>Item Number</b>	818145
<b>Construction Height</b>	100
<b>Electrical Data</b>	38 l
<b>Floor Construction</b>	Concrete flooring
<b>Floor Covering</b>	Vinyl
<b>Function</b>	Central outlet
<b>Item Color</b>	Stainless
<b>Material</b>	Acid-resistant stainless steel 1.4404
<b>Outlet Dimension</b>	Side/bottom in stainless steel in Ø75/Ø110 mm
<b>Size</b>	800x500x100 mm
<b>Surface</b>	Pickled
<b>Version</b>	Do not forget grid/outlet house

<b>Item Number</b>	818149
<b>Construction Height</b>	100
<b>Floor Construction</b>	Concrete flooring
<b>Floor Covering</b>	Vinyl
<b>Function</b>	Central outlet
<b>Item Color</b>	Stainless

<b>Material</b>	Acid-resistant stainless steel 1.4404
<b>Outlet Dimension</b>	Side/bottom in stainless steel in Ø75/Ø110 mm
<b>Size</b>	1200x600x100 mm
<b>Surface</b>	Pickled
<b>Version</b>	Do not forget grid/outlet house
<b>Item Number</b>	818155
<b>Construction Height</b>	50
<b>Floor Construction</b>	Concrete flooring
<b>Floor Covering</b>	Vinyl
<b>Function</b>	Central outlet
<b>Item Color</b>	Stainless
<b>Material</b>	Acid-resistant stainless steel 1.4404
<b>Outlet Dimension</b>	Side/bottom in stainless steel in Ø75/Ø110 mm
<b>Size</b>	500x300x50 mm
<b>Surface</b>	Pickled
<b>Version</b>	Do not forget grid/outlet house
<b>Item Number</b>	818156
<b>Construction</b>	50



<b>Height</b>	
<b>Floor Construction</b>	Concrete flooring
<b>Floor Covering</b>	Vinyl
<b>Function</b>	Central outlet
<b>Item Color</b>	Stainless
<b>Material</b>	Acid-resistant stainless steel 1.4404
<b>Outlet Dimension</b>	Side/bottom in stainless steel in Ø75/Ø110 mm
<b>Size</b>	1000x300x50 mm
<b>Surface</b>	Pickled
<b>Version</b>	Do not forget grid/outlet house
<b>Item Number</b>	818157
<b>Construction Height</b>	200
<b>Floor Construction</b>	Concrete flooring
<b>Floor Covering</b>	Vinyl
<b>Function</b>	Central outlet
<b>Item Color</b>	Stainless
<b>Material</b>	Acid-resistant stainless steel 1.4404
<b>Outlet Dimension</b>	Side/bottom in stainless steel in Ø75/Ø110 mm

<b>Size</b>	300x300x200 mm
<b>Surface</b>	Pickled
<b>Version</b>	Do not forget grid/outlet house
<b>Item Number</b>	818158
<b>Construction Height</b>	200
<b>Floor Construction</b>	Concrete flooring
<b>Floor Covering</b>	Vinyl
<b>Function</b>	Central outlet
<b>Item Color</b>	Stainless
<b>Material</b>	Acid-resistant stainless steel 1.4404
<b>Outlet Dimension</b>	Side/bottom in stainless steel in Ø75/Ø110 mm
<b>Size</b>	500x300x200 mm
<b>Surface</b>	Pickled
<b>Version</b>	Do not forget grid/outlet house
<b>Item Number</b>	818159
<b>Construction Height</b>	200
<b>Floor Construction</b>	Concrete flooring

<b>Floor Covering</b>	Vinyl
<b>Function</b>	Central outlet
<b>Item Color</b>	Stainless
<b>Material</b>	Acid-resistant stainless steel 1.4404
<b>Outlet Dimension</b>	Side/bottom in stainless steel in Ø75/Ø110 mm
<b>Size</b>	800x500x200 mm
<b>Surface</b>	Pickled
<b>Version</b>	Do not forget grid/outlet house
<b>Item Number</b>	856723
<b>Construction Height</b>	200
<b>Floor Construction</b>	Concrete flooring
<b>Floor Covering</b>	Concrete
<b>Function</b>	Central outlet
<b>Item Color</b>	Stainless
<b>Material</b>	Acid-resistant stainless steel 1.4404
<b>Outlet Dimension</b>	Side/bottom in stainless steel in Ø75/Ø110 mm
<b>Size</b>	900x600x200 mm
<b>Surface</b>	Pickled

**Version**

Do not forget grid/outlet house

Dimension (mm)	LxWxH (mm)	Dimension (mm)	LxWxH (mm)
500x300x50	503 x 303 x 50	1200x600x100	1203 x 603 x 100
1000x300x50	1003 x 303 x 50	300x300x200	303 x 303 x 200
400x400x100	403 x 403 x 100	500x300x200	503 x 303 x 200
600x400x100	603 x 403 x 100	800x500x200	803 x 503 x 200
800x500x100	803 x 503 x 100		
900x600x100	903 x 603 x 100		
900x600x200	903 x 603 x 200		

