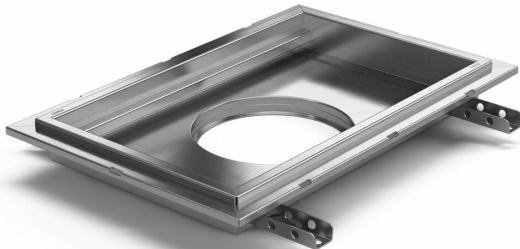


Item 818182



Purus channel volume for tile floors with glue flange is a floor channel made of acid-resistant stainless steel for installation in concrete. The floor channel is 400x400x100 mm med ett mittplacerat utlopp och är avsedd för klinkergolv som ytskikt. The floor channel needs to be supplemented with grid depending on the environment and outlet house in acid-resistant stainless steel. Purus channel volume is adapted for environments with requirements for hygiene, has a large volume and high flow capacity.

Item 818183

Purus channel volume for tile floors with glue flange is a floor channel made of acid-resistant stainless steel for installation in concrete. The floor channel is 600x400x100 mm med ett mittplacerat utlopp och är avsedd för klinkergolv som ytskikt. The floor channel needs to be supplemented with grid depending on the environment and outlet house in acid-resistant stainless steel. Purus channel volume is adapted for environments with requirements for hygiene, has a large volume and high flow capacity.

Item 818184

Purus channel volume for tile floors with glue flange is a floor channel made of acid-resistant stainless steel for installation in concrete. The floor channel is 900x600x100 mm with a mid outlet and is intended for tiled flooring. The floor channel needs to be supplemented with grid depending on the environment and outlet house in acid-resistant stainless steel. Purus channel

volume is adapted for environments with requirements for hygiene, has a large volume and high flow capacity.

Item 818185

Purus channel volume for tile floors with glue flange is a floor channel made of acid-resistant stainless steel for installation in concrete. The floor channel is 800x500x100 mm with a mid outlet and is intended for tiled flooring. The floor channel needs to be supplemented with grid depending on the environment and outlet house in acid-resistant stainless steel. Purus channel volume is adapted for environments with requirements for hygiene, has a large volume and high flow capacity.

Item 818154

Purus channel volume for tile floors with glue flange is a floor channel made of acid-resistant stainless steel for installation in concrete. The floor channel is 500x300x50 mm with a mid outlet and is intended for tiled flooring. The floor channel needs to be supplemented with grid depending on the environment and outlet house in acid-resistant stainless steel. Purus channel volume is adapted for environments with requirements for hygiene, has a large volume and high flow capacity.

Item 818187

Purus channel volume for tile floors with glue flange is a floor channel made of acid-resistant stainless steel for installation in concrete. The floor channel is 300x300x200 mm with a mid outlet and is intended for tiled flooring. The floor channel needs to be

supplemented with grid depending on the environment and outlet house in acid-resistant stainless steel. Purus channel volume is adapted for environments with requirements for hygiene, has a large volume and high flow capacity.

Item 818188

Purus channel volume for tile floors with glue flange is a floor channel made of acid-resistant stainless steel for installation in concrete. The floor channel is 500x300x200 mm with a mid outlet and is intended for tiled flooring. The floor channel needs to be supplemented with grid depending on the environment and outlet house in acid-resistant stainless steel. Purus channel volume is adapted for environments with requirements for hygiene, has a large volume and high flow capacity.

Item 818189

Purus channel volume for tile floors with glue flange is a floor channel made of acid-resistant stainless steel for installation in concrete. The floor channel is 800x500x200 mm with a mid outlet and is intended for tiled flooring. The floor channel needs to be supplemented with grid depending on the environment and outlet house in acid-resistant stainless steel. Purus channel volume is adapted for environments with requirements for hygiene, has a large volume and high flow capacity.

Item 818192

Purus channel volume for tile floors with glue flange is a floor channel made of acid-resistant stainless steel for installation in

concrete. The floor channel is 1000x300x50 mm with a mid outlet and is intended for tiled flooring. The floor channel needs to be supplemented with grid depending on the environment and outlet house in acid-resistant stainless steel. Purus channel volume is adapted for environments with requirements for hygiene, has a large volume and high flow capacity.

Item 818193

Purus channel volume for tile floors with glue flange is a floor channel made of acid-resistant stainless steel for installation in concrete. The floor channel is 1200x600x100 mm with a mid outlet and is intended for tiled flooring. The floor channel needs to be supplemented with grid depending on the environment and outlet house in acid-resistant stainless steel. Purus channel volume is adapted for environments with requirements for hygiene, has a large volume and high flow capacity.

Specifications

Size	400x400x100
Item Number	818182
Floor Construction	Concrete flooring
Material	Acid-resistant stainless steel 1.4404
Floor Covering	Tile floor with glueing flange
Construction Height	110
Surface	Pickled

Version	Do not forget grid/outlet house
Item Color	Stainless
Outlet Dimension	Side/bottom in stainless steel in Ø75/Ø110 mm
Function	Central outlet
Electrical Data	15 l
Size	600x400x100
Item Number	818183
Floor Construction	Concrete flooring
Material	Acid-resistant stainless steel 1.4404
Floor Covering	Tile floor with glueing flange
Construction Height	110
Surface	Pickled
Version	Do not forget grid/outlet house
Item Color	Stainless
Outlet Dimension	Side/bottom in stainless steel in Ø75/Ø110 mm
Function	Central outlet
Electrical Data	23 l
Size	900x600x100

Item Number	818184
Floor Construction	Concrete flooring
Material	Acid-resistant stainless steel 1.4404
Floor Covering	Tile floor with glueing flange
Construction Height	110
Surface	Pickled
Version	Do not forget grid/outlet house
Item Color	Stainless
Outlet Dimension	Side/bottom in stainless steel in Ø75/Ø110 mm
Function	Central outlet
Electrical Data	51 l
Size	800x500x100
Item Number	818185
Floor Construction	Concrete flooring
Material	Acid-resistant stainless steel 1.4404
Floor Covering	Tile floor with glueing flange
Construction Height	110
Surface	Pickled

Version	Do not forget grid/outlet house
Item Color	Stainless
Outlet Dimension	Side/bottom in stainless steel in Ø75/Ø110 mm
Function	Central outlet
Electrical Data	38 l
Size	500x300x50
Item Number	818154
Floor Construction	Concrete flooring
Material	Acid-resistant stainless steel 1.4404
Floor Covering	Tile floor with glueing flange
Construction Height	60
Surface	Pickled
Version	Do not forget grid/outlet house
Item Color	Stainless
Outlet Dimension	Side/bottom in stainless steel in Ø75/Ø110 mm
Function	Central outlet
Size	300x300x200
Item Number	818187

Floor Construction	Concrete flooring
Material	Acid-resistant stainless steel 1.4404
Floor Covering	Tile floor with glueing flange
Construction Height	210
Surface	Pickled
Version	Do not forget grid/outlet house
Item Color	Stainless
Outlet Dimension	Side/bottom in stainless steel in Ø75/Ø110 mm
Function	Central outlet
Size	500x300x200
Item Number	818188
Floor Construction	Concrete flooring
Material	Acid-resistant stainless steel 1.4404
Floor Covering	Tile floor with glueing flange
Construction Height	210
Surface	Pickled
Version	Do not forget grid/outlet house
Item Color	Stainless

Outlet Dimension	Side/bottom in stainless steel in Ø75/Ø110 mm
Function	Central outlet
Size	800x500x200
Item Number	818189
Floor Construction	Concrete flooring
Material	Acid-resistant stainless steel 1.4404
Floor Covering	Tile floor with glueing flange
Construction Height	210
Surface	Pickled
Version	Do not forget grid/outlet house
Item Color	Stainless
Outlet Dimension	Side/bottom in stainless steel in Ø75/Ø110 mm
Function	Central outlet
Size	1000x300x50
Item Number	818192
Floor Construction	Concrete flooring
Material	Acid-resistant stainless steel 1.4404

Floor Covering	Tile floor with glueing flange
Construction Height	60
Surface	Pickled
Version	Do not forget grid/outlet house
Item Color	Stainless
Outlet Dimension	Side/bottom in stainless steel in Ø75/Ø110 mm
Function	Central outlet
Size	1200x600x100
Item Number	818193
Floor Construction	Concrete flooring
Material	Acid-resistant stainless steel 1.4404
Floor Covering	Tile floor with glueing flange
Construction Height	110
Surface	Pickled
Version	Do not forget grid/outlet house
Item Color	Stainless
Outlet Dimension	Side/bottom in stainless steel in Ø75/Ø110 mm
Function	Central outlet

Dimension (mm)	LxWxH (mm)	Dimension (mm)	LxWxH (mm)
500x300x50	503 x 303 x 50	1200x600x100	1203 x 603 x 100
1000x300x50	1003 x 303 x 50	300x300x200	303 x 303 x 200
400x400x100	403 x 403 x 100	500x300x200	503 x 303 x 200
600x400x100	603 x 403 x 100	800x500x200	803 x 503 x 200
800x500x100	803 x 503 x 100		
900x600x100	903 x 603 x 100		
900x600x200	903 x 603 x 200		

