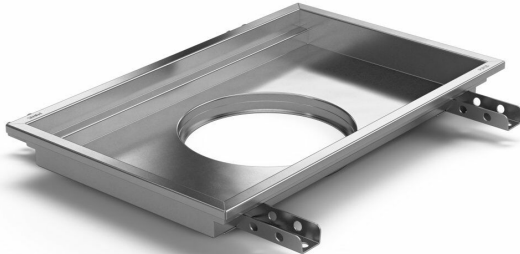


Item 818102

Purus channel volume for concrete floors is a floor channel made of acid-resistant stainless steel for installation in concrete. The floor channel is 400x400x100 mm with a mid outlet and is intended for concrete flooring. The floor channel needs to be supplemented with grid depending on the environment and outlet house in acid-resistant stainless steel. Purus channel volume is adapted for environments with requirements for hygiene, has a large volume and high flow capacity.



Item 818103

Purus channel volume for concrete floors is a floor channel made of acid-resistant stainless steel for installation in concrete. The floor channel is 600x400x100 mm with a mid outlet and is intended for concrete flooring. The floor channel needs to be supplemented with grid depending on the environment and outlet house in acid-resistant stainless steel. Purus channel volume is adapted for environments with requirements for hygiene, has a large volume and high flow capacity.

Item 818104

Purus channel volume for concrete floors is a floor channel made of acid-resistant stainless steel for installation in concrete. The floor channel is 900x600x100 mm med ett mittplacerat utlopp och är avsedd för betonggolv som ytskikt. The floor channel needs to be supplemented with grid depending on the environment and outlet house in acid-resistant stainless steel. Purus

channel volume is adapted for environments with requirements for hygiene, has a large volume and high flow capacity.

Item 818105

Purus channel volume for concrete floors is a floor channel made of acid-resistant stainless steel for installation in concrete. The floor channel is 800x500x100 mm with a mid outlet and is intended for concrete flooring. The floor channel needs to be supplemented with grid depending on the environment and outlet house in acid-resistant stainless steel. Purus channel volume is adapted for environments with requirements for hygiene, has a large volume and high flow capacity.

Item 818113

Purus channel volume for concrete floors is a floor channel made of acid-resistant stainless steel for installation in concrete. The floor channel is 1000x300x50 mm med ett mittplacerat utlopp och är avsedd för betonggolv som ytskikt. The floor channel needs to be supplemented with grid depending on the environment and outlet house in acid-resistant stainless steel. Purus channel volume is adapted for environments with requirements for hygiene, has a large volume and high flow capacity.

Item 818107

Purus channel volume for concrete floors is a floor channel made of acid-resistant stainless steel for installation in concrete. The floor channel is 300x300x200 mm with a mid outlet and is intended for concrete flooring. The floor channel needs to be

supplemented with grid depending on the environment and outlet house in acid-resistant stainless steel. Purus channel volume is adapted for environments with requirements for hygiene, has a large volume and high flow capacity.

Item 818108

Purus channel volume for concrete floors is a floor channel made of acid-resistant stainless steel for installation in concrete. The floor channel is 500x300x200 mm med ett mittplacerat utlopp och är avsedd för betonggolv som ytskikt. The floor channel needs to be supplemented with grid depending on the environment and outlet house in acid-resistant stainless steel. Purus channel volume is adapted for environments with requirements for hygiene, has a large volume and high flow capacity.

Item 818109

Purus channel volume for concrete floors is a floor channel made of acid-resistant stainless steel for installation in concrete. The floor channel is 800x500x200 mm with a mid outlet and is intended for concrete flooring. The floor channel needs to be supplemented with grid depending on the environment and outlet house in acid-resistant stainless steel. Purus channel volume is adapted for environments with requirements for hygiene, has a large volume and high flow capacity.

Item 818112

Purus channel volume for concrete floors is a floor channel made of acid-resistant stainless steel for installation in concrete.

The floor channel is 500x300x50 mm with a mid outlet and is intended for concrete flooring. The floor channel needs to be supplemented with grid depending on the environment and outlet house in acid-resistant stainless steel. Purus channel volume is adapted for environments with requirements for hygiene, has a large volume and high flow capacity.

Item 818115

Purus channel volume for concrete floors is a floor channel made of acid-resistant stainless steel for installation in concrete. The floor channel is 1200x600x100 mm with a mid outlet and is intended for concrete flooring. The floor channel needs to be supplemented with grid depending on the environment and outlet house in acid-resistant stainless steel. Purus channel volume is adapted for environments with requirements for hygiene, has a large volume and high flow capacity.

Item 856720

Purus channel volume for epoxy is a floor channel made of acid-resistant stainless steel for installation in concrete. The floor channel is 900x600x200 mm med ett mittplacerat utlopp och är avsedd för massagolv som ytskikt. The floor channel needs to be supplemented with grid depending on the environment and outlet house in acid-resistant stainless steel. Purus channel volume is adapted for environments with requirements for hygiene, has a large volume and high flow capacity.

Item Number	818102
Construction Height	100
Electrical Data	15 l
Floor Construction	Concrete flooring
Floor Covering	Concrete
Function	Central outlet
Item Color	Stainless
Material	Acid-resistant stainless steel 1.4404
Outlet Dimension	Side/bottom in stainless steel in Ø75/Ø110 mm
Size	400x400x100
Surface	Pickled
Version	Do not forget grid/outlet house

Item Number	818103
Construction Height	100
Electrical Data	23 l
Floor Construction	Concrete flooring
Floor Covering	Concrete
Function	Central outlet

Item Color	Stainless
Material	Acid-resistant stainless steel 1.4404
Outlet Dimension	Side/bottom in stainless steel in Ø75/Ø110 mm
Size	600x400x100
Surface	Pickled
Version	Do not forget grid/outlet house
Item Number	818104
Construction Height	100
Electrical Data	51 l
Floor Construction	Concrete flooring
Floor Covering	Concrete
Function	Central outlet
Item Color	Stainless
Material	Acid-resistant stainless steel 1.4404
Outlet Dimension	Side/bottom in stainless steel in Ø75/Ø110 mm
Size	900x600x100
Surface	Pickled
Version	Do not forget grid/outlet house

Item Number	818105
Construction Height	100
Electrical Data	38 l
Floor Construction	Concrete flooring
Floor Covering	Concrete
Function	Central outlet
Item Color	Stainless
Material	Acid-resistant stainless steel 1.4404
Outlet Dimension	Side/bottom in stainless steel in Ø75/Ø110 mm
Size	800x500x100
Surface	Pickled
Version	Do not forget grid/outlet house

Item Number	818113
Construction Height	50
Floor Construction	Concrete flooring
Floor Covering	Concrete
Function	Central outlet
Item Color	Stainless

Material	Acid-resistant stainless steel 1.4404
Outlet Dimension	Side/bottom in stainless steel in Ø75/Ø110 mm
Size	1000x300x50
Surface	Pickled
Version	Do not forget grid/outlet house
Item Number	818107
Construction Height	200
Floor Construction	Concrete flooring
Floor Covering	Concrete
Function	Central outlet
Item Color	Stainless
Material	Acid-resistant stainless steel 1.4404
Outlet Dimension	Side/bottom in stainless steel in Ø75/Ø110 mm
Size	300x300x200
Surface	Pickled
Version	Do not forget grid/outlet house
Item Number	818108
Construction	200

Height	
Floor Construction	Concrete flooring
Floor Covering	Concrete
Function	Central outlet
Item Color	Stainless
Material	Acid-resistant stainless steel 1.4404
Outlet Dimension	Side/bottom in stainless steel in Ø75/Ø110 mm
Size	500x300x200
Surface	Pickled
Version	Do not forget grid/outlet house
Item Number	818109
Construction Height	200
Floor Construction	Concrete flooring
Floor Covering	Concrete
Function	Central outlet
Item Color	Stainless
Material	Acid-resistant stainless steel 1.4404
Outlet Dimension	Side/bottom in stainless steel in Ø75/Ø110 mm

Size	800x500x200
Surface	Pickled
Version	Do not forget grid/outlet house
Item Number	818112
Construction Height	50
Floor Construction	Concrete flooring
Floor Covering	Concrete
Function	Central outlet
Item Color	Stainless
Material	Acid-resistant stainless steel 1.4404
Outlet Dimension	Side/bottom in stainless steel in Ø75/Ø110 mm
Size	500x300x50
Surface	Pickled
Version	Do not forget grid/outlet house
Item Number	818115
Construction Height	100
Floor Construction	Concrete flooring

Floor Covering	Concrete
Function	Central outlet
Item Color	Stainless
Material	Acid-resistant stainless steel 1.4404
Outlet Dimension	Side/bottom in stainless steel in Ø75/Ø110 mm
Size	1200x600x100
Surface	Pickled
Version	Do not forget grid/outlet house
Item Number	856720
Construction Height	200
Floor Construction	Concrete flooring
Floor Covering	Concrete
Function	Central outlet
Item Color	Stainless
Material	Acid-resistant stainless steel 1.4404
Outlet Dimension	Side/bottom in stainless steel in Ø75/Ø110 mm
Size	900x600x200
Surface	Pickled

Version

Do not forget grid/outlet house

Dimension (mm)	LxWxH (mm)	Dimension (mm)	LxWxH (mm)
500x300x50	503 x 303 x 50	1200x600x100	1203 x 603 x 100
1000x300x50	1003 x 303 x 50	300x300x200	303 x 303 x 200
400x400x100	403 x 403 x 100	500x300x200	503 x 303 x 200
600x400x100	603 x 403 x 100	800x500x200	803 x 503 x 200
800x500x100	803 x 503 x 100		
900x600x100	903 x 603 x 100		
900x600x200	903 x 603 x 200		

