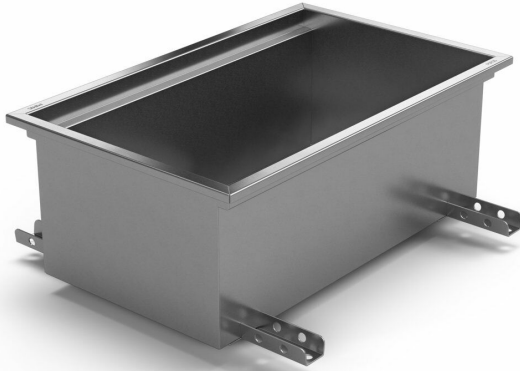


Item 856720



Purus channel volume for epoxy is a floor channel made of acid-resistant stainless steel for installation in concrete. The floor channel is 900x600x200 mm med ett mittplacerat utlopp och är avsedd för massagolv som ytskikt. The floor channel needs to be supplemented with grid depending on the environment and outlet house in acid-resistant stainless steel. Purus channel volume is adapted for environments with requirements for hygiene, has a large volume and high flow capacity.

Specifications

Item Number	856720
Construction Height	200
Floor Construction	Concrete flooring
Floor Covering	Concrete
Function	Central outlet
Item Color	Stainless
Material	Acid-resistant stainless steel 1.4404
Outlet Dimension	Bottom/side in plastic or stainless steel in Ø50, Ø75 or Ø 110 mm
Size	900x600x200
Surface	Pickled

Version

Do not forget grid/outlet house

Dimension (mm)	LxWxH (mm)	Dimension (mm)	LxWxH (mm)
500x300x50	503 x 303 x 50	1200x600x100	1203 x 603 x 100
1000x300x50	1003 x 303 x 50	300x300x200	303 x 303 x 200
400x400x100	403 x 403 x 100	500x300x200	503 x 303 x 200
600x400x100	603 x 403 x 100	800x500x200	803 x 503 x 200
800x500x100	803 x 503 x 100		
900x600x100	903 x 603 x 100		
900x600x200	903 x 603 x 200		

