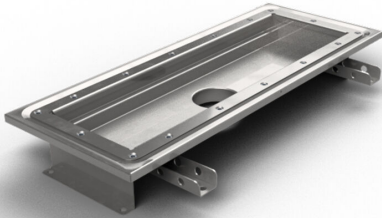


Item 856640

Purus channel 150 is a channel made of acid-resistant stainless steel for installation in concrete floors. The channel has a central outlet and is intended for vinyl floors as a surface layer. Supplement with gully base in plastic or acid-resistant stainless steel and mesh grate for higher load classes or grating for K3 (300 kg) load.



Item 856641

Purus channel 150 is a channel made of acid-resistant stainless steel for installation in concrete floors. The channel has a central outlet and is intended for vinyl floors as a surface layer. Supplement with gully base in plastic or acid-resistant stainless steel and mesh grate for higher load classes or grating for K3 (300 kg) load.

Item 856642

Purus channel 150 is a channel made of acid-resistant stainless steel for installation in concrete floors. The channel has a central outlet and is intended for vinyl floors as a surface layer. Supplement with gully base in plastic or acid-resistant stainless steel and mesh grate for higher load classes or grating for K3 (300 kg) load.

Item 856593

Purus channel 150 is a channel made of acid-resistant stainless steel for installation in concrete floors. The channel has a central outlet and is intended for vinyl floors as a

surface layer. Supplement with gully base in plastic or acid-resistant stainless steel and mesh grate for higher load classes or grating for K3 (300 kg) load.

Item 856594

Purus channel 150 is a channel made of acid-resistant stainless steel for installation in concrete floors. The channel has a central outlet and is intended for vinyl floors as a surface layer. Supplement with gully base in plastic or acid-resistant stainless steel and mesh grate for higher load classes or grating for K3 (300 kg) load.

Item 856673

Purus channel 150 is a channel made of acid-resistant stainless steel for installation in concrete floors. The channel has a central outlet and is intended for vinyl floors as a surface layer. Supplement with gully base in plastic or acid-resistant stainless steel and mesh grate for higher load classes or grating for K3 (300 kg) load.

Item 856674

Purus channel 150 is a channel made of acid-resistant stainless steel for installation in concrete floors. The channel has a central outlet and is intended for vinyl floors as a surface layer. Supplement with gully base in plastic or acid-resistant stainless steel and mesh grate for higher load classes or grating for K3 (300 kg) load.

Item 856675

Purus channel 150 is a channel made of acid-resistant stainless steel for installation in concrete floors. The channel has a central outlet and is intended for vinyl floors as a surface layer. Supplement with gully base in plastic or acid-resistant stainless steel and mesh grate for higher load classes or grating for K3 (300 kg) load.

Item 856676

Purus channel 150 is a channel made of acid-resistant stainless steel for installation in concrete floors. The channel has a central outlet and is intended for vinyl floors as a surface layer. Supplement with gully base in plastic or acid-resistant stainless steel and mesh grate for higher load classes or grating for K3 (300 kg) load.

Item 856677

Purus channel 150 is a channel made of acid-resistant stainless steel for installation in concrete floors. The channel has a central outlet and is intended for vinyl floors as a surface layer. Supplement with gully base in plastic or acid-resistant stainless steel and mesh grate for higher load classes or grating for K3 (300 kg) load.

Item 856678

Purus channel 150 is a channel made of acid-resistant stainless steel for installation in concrete floors. The channel has a central outlet and is intended for vinyl floors as a surface layer. Supplement with gully base in plastic or acid-resistant stainless steel and mesh grate for higher load classes or grating for K3 (300 kg) load.

Item 856679

Purus channel 150 is a channel made of acid-resistant stainless steel for installation in concrete floors. The channel has a central outlet and is intended for vinyl floors as a surface layer. Supplement with gully base in plastic or acid-resistant stainless steel and mesh grate for higher load classes or grating for K3 (300 kg) load.

Specifications

Item Number	856640
Construction Height	52
Floor Construction	Concrete flooring
Floor Covering	Vinyl
Function	Central outlet
Item Color	Stainless
Material	Acid-resistant stainless steel 1.4404
Outlet Dimension	Bottom/side in plastic or stainless steel in Ø50, Ø75 or Ø 110 mm
Size	800×150 mm
Surface	Pickled
Version	Do not forget grid/outlet house
Item Number	856641

Construction Height	52
Floor Construction	Concrete flooring
Floor Covering	Vinyl
Function	Central outlet
Item Color	Stainless
Material	Acid-resistant stainless steel 1.4404
Outlet Dimension	Bottom/side in plastic or stainless steel in Ø50, Ø75 or Ø 110 mm
Size	1000×150 mm
Surface	Pickled
Version	Do not forget grid/outlet house
Item Number	856642
Construction Height	52
Floor Construction	Concrete flooring
Floor Covering	Vinyl
Function	Central outlet
Item Color	Stainless
Material	Acid-resistant stainless steel 1.4404
Outlet Dimension	Bottom/side in plastic or stainless steel in Ø50, Ø75 or Ø 110 mm

Size	1200×150 mm
Surface	Pickled
Version	Do not forget grid/outlet house
Item Number	856593
Construction Height	52
Floor Construction	Concrete flooring
Floor Covering	Vinyl
Function	Central outlet
Item Color	Stainless
Material	Acid-resistant stainless steel 1.4404
Outlet Dimension	Bottom/side in plastic or stainless steel in Ø50, Ø75 or Ø 110 mm
Size	500×150 mm
Surface	Pickled
Version	Do not forget grid/outlet house
Item Number	856594
Construction Height	52
Floor Construction	Concrete flooring

Floor Covering	Vinyl
Function	Central outlet
Item Color	Stainless
Material	Acid-resistant stainless steel 1.4404
Outlet Dimension	Bottom/side in plastic or stainless steel in Ø50, Ø75 or Ø 110 mm
Size	1300×150 mm
Surface	Pickled
Version	Do not forget grid/outlet house
Item Number	856673
Construction Height	52
Floor Construction	Concrete flooring
Floor Covering	Vinyl
Function	Central outlet
Item Color	Stainless
Material	Acid-resistant stainless steel 1.4404
Outlet Dimension	Bottom/side in plastic or stainless steel in Ø50, Ø75 or Ø 110 mm
Size	600×150 mm
Surface	Pickled

Version	Do not forget grid/outlet house
Item Number	856674
Construction Height	52
Floor Construction	Concrete flooring
Floor Covering	Vinyl
Function	Central outlet
Item Color	Stainless
Material	Acid-resistant stainless steel 1.4404
Outlet Dimension	Bottom/side in plastic or stainless steel in Ø50, Ø75 or Ø 110 mm
Size	900×150 mm
Surface	Pickled
Version	Do not forget grid/outlet house
Item Number	856675
Construction Height	52
Floor Construction	Concrete flooring
Floor Covering	Vinyl
Function	Central outlet

Item Color	Stainless
Material	Acid-resistant stainless steel 1.4404
Outlet Dimension	Bottom/side in plastic or stainless steel in Ø50, Ø75 or Ø 110 mm
Size	1100×150 mm
Surface	Pickled
Version	Do not forget grid/outlet house

Item Number	856676
Construction Height	52
Floor Construction	Concrete flooring
Floor Covering	Vinyl
Function	Central outlet

Item Color	Stainless
Material	Acid-resistant stainless steel 1.4404
Outlet Dimension	Bottom/side in plastic or stainless steel in Ø50, Ø75 or Ø 110 mm
Size	1400×150 mm
Surface	Pickled
Version	Do not forget grid/outlet house

Item Number	856677
--------------------	--------

Construction Height	52
Floor Construction	Concrete flooring
Floor Covering	Vinyl
Function	Central outlet
Item Color	Stainless
Material	Acid-resistant stainless steel 1.4404
Outlet Dimension	Bottom/side in plastic or stainless steel in Ø50, Ø75 or Ø 110 mm
Size	1500×150 mm
Surface	Pickled
Version	Do not forget grid/outlet house
Item Number	856678
Construction Height	52
Floor Construction	Concrete flooring
Floor Covering	Vinyl
Function	Central outlet
Item Color	Stainless
Material	Acid-resistant stainless steel 1.4404
Outlet Dimension	Bottom/side in plastic or stainless steel in Ø50, Ø75 or Ø 110 mm

Size	2000×150 mm
Surface	Pickled
Version	Do not forget grid/outlet house
Item Number	856679
Construction Height	52
Floor Construction	Concrete flooring
Floor Covering	Vinyl
Function	Central outlet
Item Color	Stainless
Material	Acid-resistant stainless steel 1.4404
Outlet Dimension	Bottom/side in plastic or stainless steel in Ø50, Ø75 or Ø 110 mm
Size	2500×150 mm
Surface	Pickled
Version	Do not forget grid/outlet house

Dimension (mm)	LxW (mm)	H (mm)
500x150	502x151	66,3
600x150	602x151	66,3
800x150	802x151	66,3
900x150	905x151	66,3
1000x150	1002x151	66,3
1100x150	1102x151	71,3
1200x150	1202x151	71,3
1300x150	1302x151	71,3
1400x150	1402x151	71,3
1500x150	1502x151	71,3
2000x150	2002x151	76,3
2500x150	2502x151	76,3

