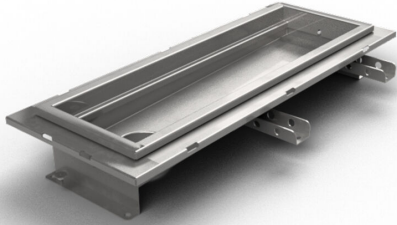


## Item 856670

Purus channel 150 is a channel made of acid-resistant stainless steel for installation in concrete floors. The channel has a central outlet and is intended for tiled floors as a surface layer. Supplement with gully base in plastic or acid-resistant stainless steel and mesh grate for higher load classes or grating for K3 (300 kg) load.



## Item 856671

Purus channel 150 is a channel made of acid-resistant stainless steel for installation in concrete floors. The channel has a central outlet and is intended for tiled floors as a surface layer. Supplement with gully base in plastic or acid-resistant stainless steel and mesh grate for higher load classes or grating for K3 (300 kg) load.

## Item 856672

Purus channel 150 is a channel made of acid-resistant stainless steel for installation in concrete floors. The channel has a central outlet and is intended for tiled floors as a surface layer. Supplement with gully base in plastic or acid-resistant stainless steel and mesh grate for higher load classes or grating for K3 (300 kg) load.

## Item 856591

Purus channel 150 is a channel made of acid-resistant stainless steel for installation in concrete floors. The channel has a central outlet and is intended for tiled floors as a

surface layer. Supplement with gully base in plastic or acid-resistant stainless steel and mesh grate for higher load classes or grating for K3 (300 kg) load.

#### Item 856592

Purus channel 150 is a channel made of acid-resistant stainless steel for installation in concrete floors. The channel has a central outlet and is intended for tiled floors as a surface layer. Supplement with gully base in plastic or acid-resistant stainless steel and mesh grate for higher load classes or grating for K3 (300 kg) load.

#### Item 856663

Purus channel 150 is a channel made of acid-resistant stainless steel for installation in concrete floors. The channel has a central outlet and is intended for tiled floors as a surface layer. Supplement with gully base in plastic or acid-resistant stainless steel and mesh grate for higher load classes or grating for K3 (300 kg) load.

#### Item 856664

Purus channel 150 is a channel made of acid-resistant stainless steel for installation in concrete floors. The channel has a central outlet and is intended for tiled floors as a surface layer. Supplement with gully base in plastic or acid-resistant stainless steel and mesh grate for higher load classes or grating for K3 (300 kg) load.

#### Item 856665

Purus channel 150 is a channel made of acid-resistant stainless steel for installation in concrete floors. The channel has a central outlet and is intended for tiled floors as a surface layer. Supplement with gully base in plastic or acid-resistant stainless steel and mesh grate for higher load classes or grating for K3 (300 kg) load.

#### Item 856666

Purus channel 150 is a channel made of acid-resistant stainless steel for installation in concrete floors. The channel has a central outlet and is intended for tiled floors as a surface layer. Supplement with gully base in plastic or acid-resistant stainless steel and mesh grate for higher load classes or grating for K3 (300 kg) load.

#### Item 856667

Purus channel 150 is a channel made of acid-resistant stainless steel for installation in concrete floors. The channel has a central outlet and is intended for tiled floors as a surface layer. Supplement with gully base in plastic or acid-resistant stainless steel and mesh grate for higher load classes or grating for K3 (300 kg) load.

#### Item 856668

Purus channel 150 is a channel made of acid-resistant stainless steel for installation in concrete floors. The channel has a central outlet and is intended for tiled floors as a surface layer. Supplement with gully base in plastic or acid-resistant stainless steel and mesh grate for higher load classes or grating for K3 (300 kg) load.

## Item 856669

Purus channel 150 is a channel made of acid-resistant stainless steel for installation in concrete floors. The channel has a central outlet and is intended for tiled floors as a surface layer. Supplement with gully base in plastic or acid-resistant stainless steel and mesh grate for higher load classes or grating for K3 (300 kg) load.

### Specifications

<b>Item Number</b>	856670
<b>Construction Height</b>	68
<b>Floor Construction</b>	Concrete flooring
<b>Floor Covering</b>	Tile floor with glueing flange
<b>Function</b>	End outlet
<b>Item Color</b>	Stainless
<b>Material</b>	Acid-resistant stainless steel 1.4404
<b>Outlet Dimension</b>	Bottom/side in plastic or stainless steel in Ø50, Ø75 or Ø 110 mm
<b>Size</b>	800×150 mm
<b>Surface</b>	Pickled
<b>Version</b>	Do not forget grid/outlet house
<b>Item Number</b>	856671

<b>Construction Height</b>	68
<b>Floor Construction</b>	Concrete flooring
<b>Floor Covering</b>	Tile floor with glueing flange
<b>Function</b>	End outlet
<b>Item Color</b>	Stainless
<b>Material</b>	Acid-resistant stainless steel 1.4404
<b>Outlet Dimension</b>	Bottom/side in plastic or stainless steel in Ø50, Ø75 or Ø 110 mm
<b>Size</b>	1000×150 mm
<b>Surface</b>	Pickled
<b>Version</b>	Do not forget grid/outlet house
<b>Item Number</b>	856672
<b>Construction Height</b>	73
<b>Floor Construction</b>	Concrete flooring
<b>Floor Covering</b>	Tile floor with glueing flange
<b>Function</b>	End outlet
<b>Item Color</b>	Stainless
<b>Material</b>	Acid-resistant stainless steel 1.4404
<b>Outlet Dimension</b>	Bottom/side in plastic or stainless steel in Ø50, Ø75 or Ø 110 mm

<b>Size</b>	1200×150 mm
<b>Surface</b>	Pickled
<b>Version</b>	Do not forget grid/outlet house
<b>Item Number</b>	856591
<b>Construction Height</b>	56
<b>Floor Construction</b>	Concrete flooring
<b>Floor Covering</b>	Tile floor with glueing flange
<b>Function</b>	End outlet
<b>Item Color</b>	Stainless
<b>Material</b>	Acid-resistant stainless steel 1.4404
<b>Outlet Dimension</b>	Bottom/side in plastic or stainless steel in Ø50, Ø75 or Ø 110 mm
<b>Size</b>	500×150 mm
<b>Surface</b>	Pickled
<b>Version</b>	Do not forget grid/outlet house
<b>Item Number</b>	856592
<b>Construction Height</b>	61
<b>Floor Construction</b>	Concrete flooring

<b>Floor Covering</b>	Tile floor with glueing flange
<b>Function</b>	End outlet
<b>Item Color</b>	Stainless
<b>Material</b>	Acid-resistant stainless steel 1.4404
<b>Outlet Dimension</b>	Bottom/side in plastic or stainless steel in Ø50, Ø75 or Ø 110 mm
<b>Size</b>	1300×150 mm
<b>Surface</b>	Pickled
<b>Version</b>	Do not forget grid/outlet house
<b>Item Number</b>	856663
<b>Construction Height</b>	56
<b>Floor Construction</b>	Concrete flooring
<b>Floor Covering</b>	Tile floor with glueing flange
<b>Function</b>	End outlet
<b>Item Color</b>	Stainless
<b>Material</b>	Acid-resistant stainless steel 1.4404
<b>Outlet Dimension</b>	Bottom/side in plastic or stainless steel in Ø50, Ø75 or Ø 110 mm
<b>Size</b>	600×150 mm
<b>Surface</b>	Pickled

<b>Version</b>	Do not forget grid/outlet house
<b>Item Number</b>	856664
<b>Construction Height</b>	56
<b>Floor Construction</b>	Concrete flooring
<b>Floor Covering</b>	Tile floor with glueing flange
<b>Function</b>	End outlet
<b>Item Color</b>	Stainless
<b>Material</b>	Acid-resistant stainless steel 1.4404
<b>Outlet Dimension</b>	Bottom/side in plastic or stainless steel in Ø50, Ø75 or Ø 110 mm
<b>Size</b>	900×150 mm
<b>Surface</b>	Pickled
<b>Version</b>	Do not forget grid/outlet house
<b>Item Number</b>	856665
<b>Construction Height</b>	61
<b>Floor Construction</b>	Concrete flooring
<b>Floor Covering</b>	Tile floor with glueing flange
<b>Function</b>	End outlet



<b>Item Color</b>	Stainless
<b>Material</b>	Acid-resistant stainless steel 1.4404
<b>Outlet Dimension</b>	Bottom/side in plastic or stainless steel in Ø50, Ø75 or Ø 110 mm
<b>Size</b>	1100×150 mm
<b>Surface</b>	Pickled
<b>Version</b>	Do not forget grid/outlet house
<b>Item Number</b>	856666
<b>Construction Height</b>	61
<b>Floor Construction</b>	Concrete flooring
<b>Floor Covering</b>	Tile floor with glueing flange
<b>Function</b>	End outlet
<b>Item Color</b>	Stainless
<b>Material</b>	Acid-resistant stainless steel 1.4404
<b>Outlet Dimension</b>	Bottom/side in plastic or stainless steel in Ø50, Ø75 or Ø 110 mm
<b>Size</b>	1400×150 mm
<b>Surface</b>	Pickled
<b>Version</b>	Do not forget grid/outlet house
<b>Item Number</b>	856667

<b>Construction Height</b>	61
<b>Floor Construction</b>	Concrete flooring
<b>Floor Covering</b>	Tile floor with glueing flange
<b>Function</b>	End outlet
<b>Item Color</b>	Stainless
<b>Material</b>	Acid-resistant stainless steel 1.4404
<b>Outlet Dimension</b>	Bottom/side in plastic or stainless steel in Ø50, Ø75 or Ø 110 mm
<b>Size</b>	1500×150 mm
<b>Surface</b>	Pickled
<b>Version</b>	Do not forget grid/outlet house
<b>Item Number</b>	856668
<b>Construction Height</b>	66
<b>Floor Construction</b>	Concrete flooring
<b>Floor Covering</b>	Tile floor with glueing flange
<b>Function</b>	End outlet
<b>Item Color</b>	Stainless
<b>Material</b>	Acid-resistant stainless steel 1.4404
<b>Outlet Dimension</b>	Bottom/side in plastic or stainless steel in Ø50, Ø75 or Ø 110 mm

<b>Size</b>	2000×150 mm
<b>Surface</b>	Pickled
<b>Version</b>	Do not forget grid/outlet house
<b>Item Number</b>	856669
<b>Construction Height</b>	66
<b>Floor Construction</b>	Concrete flooring
<b>Floor Covering</b>	Tile floor with glueing flange
<b>Function</b>	End outlet
<b>Item Color</b>	Stainless
<b>Material</b>	Acid-resistant stainless steel 1.4404
<b>Outlet Dimension</b>	Bottom/side in plastic or stainless steel in Ø50, Ø75 or Ø 110 mm
<b>Size</b>	2500×150 mm
<b>Surface</b>	Pickled
<b>Version</b>	Do not forget grid/outlet house

Dimension (mm)	LxW (mm)	H (mm)
500x150	502x151	66,3
600x150	602x151	66,3
800x150	802x151	66,3
900x150	905x151	66,3
1000x150	1002x151	66,3
1100x150	1102x151	71,3
1200x150	1202x151	71,3
1300x150	1302x151	71,3
1400x150	1402x151	71,3
1500x150	1502x151	71,3
2000x150	2002x151	76,3
2500x150	2502x151	76,3

