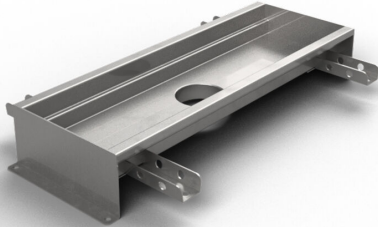


Item 856601

Purus channel 150 is a channel made of acid-resistant stainless steel for installation in concrete floors. The channel has a central outlet and is intended for concrete floors as a surface layer. Supplement with gully base in plastic or acid-resistant stainless steel and mesh grate for higher load classes or grating for K3 (300 kg) load.



Item 856602

Purus channel 150 is a channel made of acid-resistant stainless steel for installation in concrete floors. The channel has a central outlet and is intended for concrete floors as a surface layer. Supplement with gully base in plastic or acid-resistant stainless steel and mesh grate for higher load classes or grating for K3 (300 kg) load.

Item 856600

Purus channel 150 is a channel made of acid-resistant stainless steel for installation in concrete floors. The channel has a central outlet and is intended for concrete floors as a surface layer. Supplement with gully base in plastic or acid-resistant stainless steel and mesh grate for higher load classes or grating for K3 (300 kg) load.

Item 856581

Purus channel 150 is a channel made of acid-resistant stainless steel for installation in concrete floors. The channel has a central outlet and is intended for concrete floors as

a surface layer. Supplement with gully base in plastic or acid-resistant stainless steel and mesh grate for higher load classes or grating for K3 (300 kg) load.

Item 856582

Purus channel 150 is a channel made of acid-resistant stainless steel for installation in concrete floors. The channel has a central outlet and is intended for concrete floors as a surface layer. Supplement with gully base in plastic or acid-resistant stainless steel and mesh grate for higher load classes or grating for K3 (300 kg) load.

Item 856613

Purus channel 150 is a channel made of acid-resistant stainless steel for installation in concrete floors. The channel has a central outlet and is intended for concrete floors as a surface layer. Supplement with gully base in plastic or acid-resistant stainless steel and mesh grate for higher load classes or grating for K3 (300 kg) load.

Item 856614

Purus channel 150 is a channel made of acid-resistant stainless steel for installation in concrete floors. The channel has a central outlet and is intended for concrete floors as a surface layer. Supplement with gully base in plastic or acid-resistant stainless steel and mesh grate for higher load classes or grating for K3 (300 kg) load.

Item 856615

Purus channel 150 is a channel made of acid-resistant stainless steel for installation in concrete floors. The channel has a central outlet and is intended for concrete floors as a surface layer. Supplement with gully base in plastic or acid-resistant stainless steel and mesh grate for higher load classes or grating for K3 (300 kg) load.

Item 856616

Purus channel 150 is a channel made of acid-resistant stainless steel for installation in concrete floors. The channel has a central outlet and is intended for concrete floors as a surface layer. Supplement with gully base in plastic or acid-resistant stainless steel and mesh grate for higher load classes or grating for K3 (300 kg) load.

Item 856617

Purus channel 150 is a channel made of acid-resistant stainless steel for installation in concrete floors. The channel has a central outlet and is intended for concrete floors as a surface layer. Supplement with gully base in plastic or acid-resistant stainless steel and mesh grate for higher load classes or grating for K3 (300 kg) load.

Item 856618

Purus channel 150 is a channel made of acid-resistant stainless steel for installation in concrete floors. The channel has a central outlet and is intended for concrete floors as a surface layer. Supplement with gully base in plastic or acid-resistant stainless steel and mesh grate for higher load classes or grating for K3 (300 kg) load.

Item 856619

Purus channel 150 is a channel made of acid-resistant stainless steel for installation in concrete floors. The channel has a central outlet and is intended for concrete floors as a surface layer. Supplement with gully base in plastic or acid-resistant stainless steel and mesh grate for higher load classes or grating for K3 (300 kg) load.

Specifications

Item Number	856601
Construction Height	52
Floor Construction	Concrete flooring
Floor Covering	Concrete
Function	Central outlet
Item Color	Stainless
Material	Acid-resistant stainless steel 1.4404
Outlet Dimension	Bottom/side in plastic or stainless steel in Ø50, Ø75 or Ø 110 mm
Size	1000×150
Surface	Pickled
Version	Do not forget grid/outlet house
Item Number	856602

Construction Height	52
Floor Construction	Concrete flooring
Floor Covering	Concrete
Function	Central outlet
Item Color	Stainless
Material	Acid-resistant stainless steel 1.4404
Outlet Dimension	Bottom/side in plastic or stainless steel in Ø50, Ø75 or Ø 110 mm
Size	1200×150
Surface	Pickled
Version	Do not forget grid/outlet house
Item Number	856600
Construction Height	52
Floor Construction	Concrete flooring
Floor Covering	Concrete
Function	Central outlet
Item Color	Stainless
Material	Acid-resistant stainless steel 1.4404
Outlet Dimension	Bottom/side in plastic or stainless steel in Ø50, Ø75 or Ø 110 mm

Size	800×150
Surface	Pickled
Version	Do not forget grid/outlet house
Item Number	856581
Construction Height	52
Floor Construction	Concrete flooring
Floor Covering	Concrete
Function	Central outlet
Item Color	Stainless
Material	Acid-resistant stainless steel 1.4404
Outlet Dimension	Bottom/side in plastic or stainless steel in Ø50, Ø75 or Ø 110 mm
Size	500×100
Surface	Pickled
Version	Do not forget grid/outlet house
Item Number	856582
Construction Height	52
Floor Construction	Concrete flooring

Floor Covering	Concrete
Function	Central outlet
Item Color	Stainless
Material	Acid-resistant stainless steel 1.4404
Outlet Dimension	Bottom/side in plastic or stainless steel in Ø50, Ø75 or Ø 110 mm
Size	1300×150
Surface	Pickled
Version	Do not forget grid/outlet house
Item Number	856613
Construction Height	52
Floor Construction	Concrete flooring
Floor Covering	Concrete
Function	Central outlet
Item Color	Stainless
Material	Acid-resistant stainless steel 1.4404
Outlet Dimension	Bottom/side in plastic or stainless steel in Ø50, Ø75 or Ø 110 mm
Size	600×150
Surface	Pickled

Version	Do not forget grid/outlet house
Item Number	856614
Construction Height	52
Floor Construction	Concrete flooring
Floor Covering	Concrete
Function	Central outlet
Item Color	Stainless
Material	Acid-resistant stainless steel 1.4404
Outlet Dimension	Bottom/side in plastic or stainless steel in Ø50, Ø75 or Ø 110 mm
Size	900×150
Surface	Pickled
Version	Do not forget grid/outlet house
Item Number	856615
Construction Height	52
Floor Construction	Concrete flooring
Floor Covering	Concrete
Function	Central outlet

Item Color	Stainless
Material	Acid-resistant stainless steel 1.4404
Outlet Dimension	Bottom/side in plastic or stainless steel in Ø50, Ø75 or Ø 110 mm
Size	1100×150
Surface	Pickled
Version	Do not forget grid/outlet house
Item Number	856616
Construction Height	52
Floor Construction	Concrete flooring
Floor Covering	Concrete
Function	Central outlet
Item Color	Stainless
Material	Acid-resistant stainless steel 1.4404
Outlet Dimension	Bottom/side in plastic or stainless steel in Ø50, Ø75 or Ø 110 mm
Size	1400×150
Surface	Pickled
Version	Do not forget grid/outlet house
Item Number	856617

Construction Height	52
Floor Construction	Concrete flooring
Floor Covering	Concrete
Function	Central outlet
Item Color	Stainless
Material	Acid-resistant stainless steel 1.4404
Outlet Dimension	Bottom/side in plastic or stainless steel in Ø50, Ø75 or Ø 110 mm
Size	1500×150
Surface	Pickled
Version	Do not forget grid/outlet house
Item Number	856618
Construction Height	52
Floor Construction	Concrete flooring
Floor Covering	Concrete
Function	Central outlet
Item Color	Stainless
Material	Acid-resistant stainless steel 1.4404
Outlet Dimension	Bottom/side in plastic or stainless steel in Ø50, Ø75 or Ø 110 mm

Size	2000×150
Surface	Pickled
Version	Do not forget grid/outlet house
Item Number	856619
Construction Height	52
Floor Construction	Concrete flooring
Floor Covering	Concrete
Function	Central outlet
Item Color	Stainless
Material	Acid-resistant stainless steel 1.4404
Outlet Dimension	Bottom/side in plastic or stainless steel in Ø50, Ø75 or Ø 110 mm
Size	2500×150
Surface	Pickled
Version	Do not forget grid/outlet house

Dimension (mm)	LxW (mm)	H (mm)
500x150	502x151	66,3
600x150	602x151	66,3
800x150	802x151	66,3
900x150	905x151	66,3
1000x150	1002x151	66,3
1100x150	1102x151	71,3
1200x150	1202x151	71,3
1300x150	1302x151	71,3
1400x150	1402x151	71,3
1500x150	1502x151	71,3
2000x150	2002x151	76,3
2500x150	2502x151	76,3

