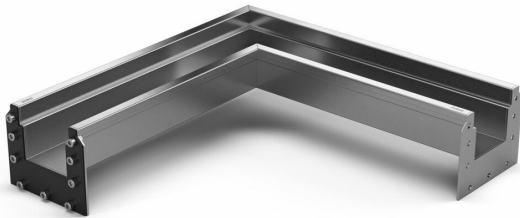


## Item 855706



Purus channel 100 modul L-angle 65 is a floor channel made of acid-resistant stainless steel for installation in concrete. The floor channel is intended for concrete, epoxy and tile floors without a waterproofing membrane. The floor channel is 100 mm wide and has a built-in fall of which the height is 65 mm and length 500×500 mm. The floor channel is delivered with gasket and screw connection for installation but needs to be supplemented with grid depending on the environment and outlet house. The total height with screw joints is 129 mm.

## Item 855707

Purus channel 100 modul L-angle 80 is a floor channel made of acid-resistant stainless steel for installation in concrete. The floor channel is intended for concrete, epoxy and tile floors without a waterproofing membrane. The floor channel is 100 mm wide and has a built-in fall of which the height is 80 mm and length 500×500 mm. The floor channel is delivered with gasket and screw connection for installation but needs to be supplemented with grid depending on the environment and outlet house. The total height with screw joints is 129 mm.

## Item 855708

Purus channel 100 modul L-angle 95 is a floor channel made of acid-resistant stainless steel for installation in concrete. The floor channel is intended for concrete, epoxy and tile floors without a

waterproofing membrane. The floor channel is 100 mm wide and has a built-in fall of which the height is 95 mm and length 500x500 mm. The floor channel is delivered with gasket and screw connection for installation but needs to be supplemented with grid depending on the environment and outlet house. The total height with screw joints is 129 mm.

## Specifications

<b>Item Number</b>	855706
<b>Floor Construction</b>	Concrete flooring
<b>Floor Covering</b>	Concrete
<b>Function</b>	With slope
<b>Item Color</b>	Stainless
<b>Material</b>	Acid-resistant stainless steel 1.4404
<b>Size</b>	500x500x100
<b>Surface</b>	Pickled
<b>Version</b>	Do not forget grid/grating
<b>Item Number</b>	855707
<b>Floor Construction</b>	Concrete flooring
<b>Floor Covering</b>	Concrete
<b>Function</b>	With slope
<b>Item Color</b>	Stainless

<b>Material</b>	Acid-resistant stainless steel 1.4404
<b>Size</b>	500x500x100
<b>Surface</b>	Pickled
<b>Version</b>	Do not forget grid/grating

<b>Item Number</b>	855708
--------------------	--------

<b>Floor Construction</b>	Concrete flooring
---------------------------	-------------------

<b>Floor Covering</b>	Concrete
-----------------------	----------

<b>Function</b>	With slope
-----------------	------------

<b>Item Color</b>	Stainless
-------------------	-----------

<b>Material</b>	Acid-resistant stainless steel 1.4404
-----------------	---------------------------------------

<b>Size</b>	500x500x100
-------------	-------------

<b>Surface</b>	Pickled
----------------	---------

<b>Version</b>	Do not forget grid/grating
----------------	----------------------------

